

# Quick Installation Guide

## Indoor/Outdoor Access Point

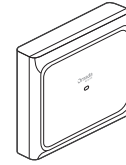


Scan for  
EAP Start Guide

Note: EAP650 D120-Outdoor is used as an example throughout the guide. Images may differ from your actual product.

©2026 TP-Link 7100003049 REV2.0.1

### Package Contents



1×



1×



For Securing the  
Grounding Wire

1×

### Waterproof Kit



1×



For  
Unshielded  
Cable

1×



For  
Shielded  
Cable

1×



1×



1×

### Mounting Kit



1×



1×



4×



1×



2×



4×



4×

## Installation

### Option 1: Pole Mounting



1×



1×



4×

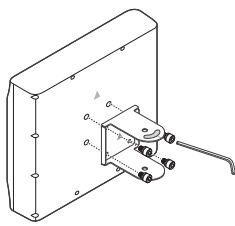


1×

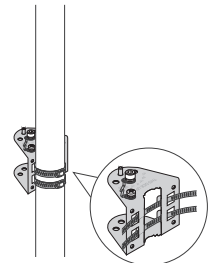


2×

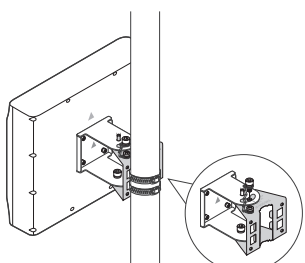
1



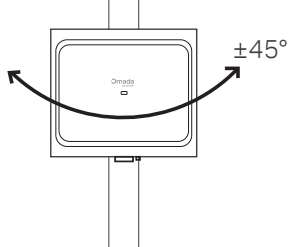
2



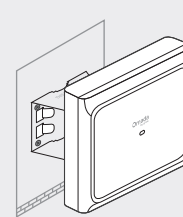
3



4



### Option 2: Wall Mounting



1×



1×



4×



1×

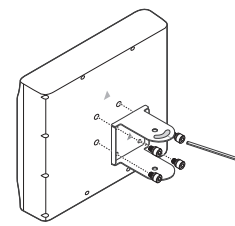


4×

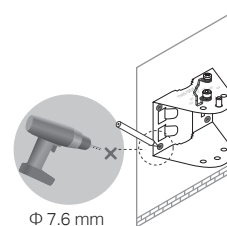


4×

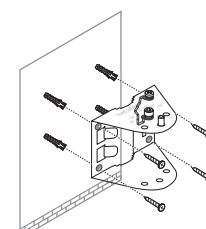
1



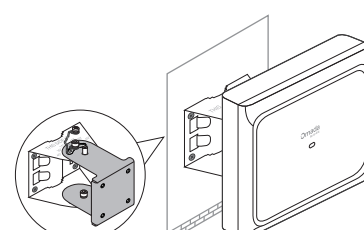
2



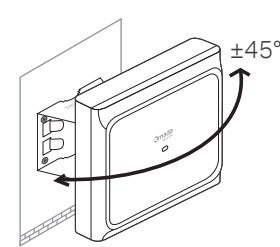
3



4



5



### More Mounting Options

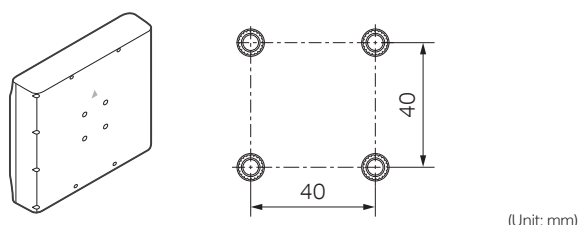
#### • Optional AP Mount Accessories

For additional rotation options, you can purchase optional AP mount accessories as needed. For more info, go to <https://www.omadanetworks.com/business-networking/omada-accessory/ap-accessory/>

#### • Compatible Fixing/Mounting Adapters

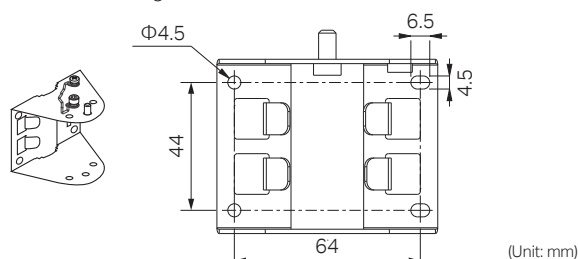
For additional installation options (such as boom installation), you can prepare fixing/mounting adapters that are compatible with the following interfaces for installation:

The interface on the back of the product (fixed with M5 screws):



(Unit: mm)

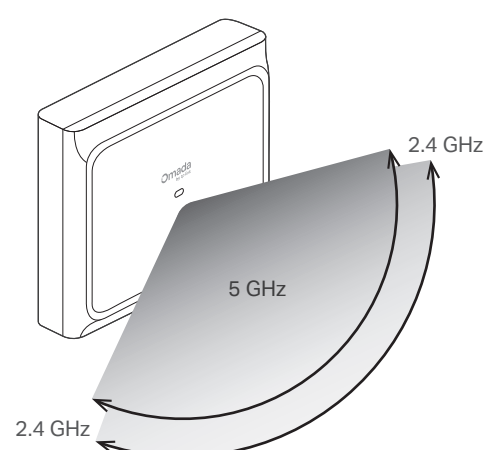
The interface on the mounting bracket:



(Unit: mm)

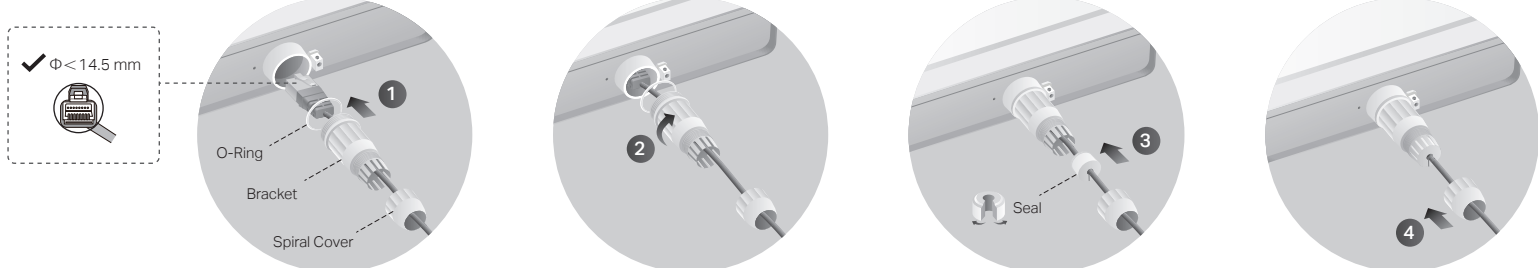
### Antenna Orientation

With built-in directional antennas, the EAP provides sector-shaped network coverage. Install the EAP with the front facing the target area. For antenna details, refer to the product specifications or datasheet on our official website.



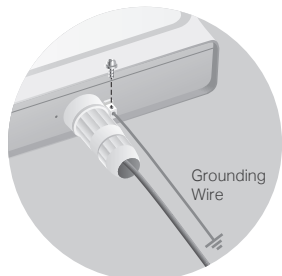
# Connection

## 1. Waterproofing



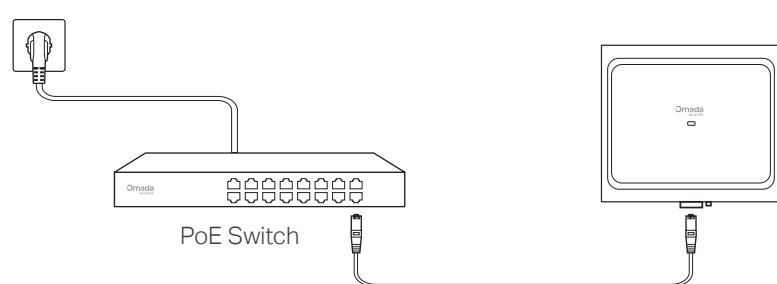
Note: To ensure waterproofing, choose the proper seal according to the type and diameter of the Ethernet cable.

## 2. Grounding



Note: For lightning and ESD protection, connect the EAP's grounding terminal to grounding facilities using a proper grounding wire, which should meet local installation requirements.

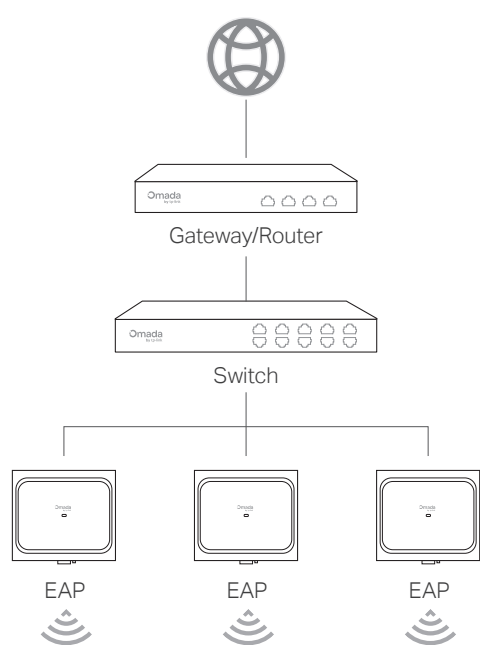
## 3. Power On



# Configuration

## Option 1: Standalone Mode

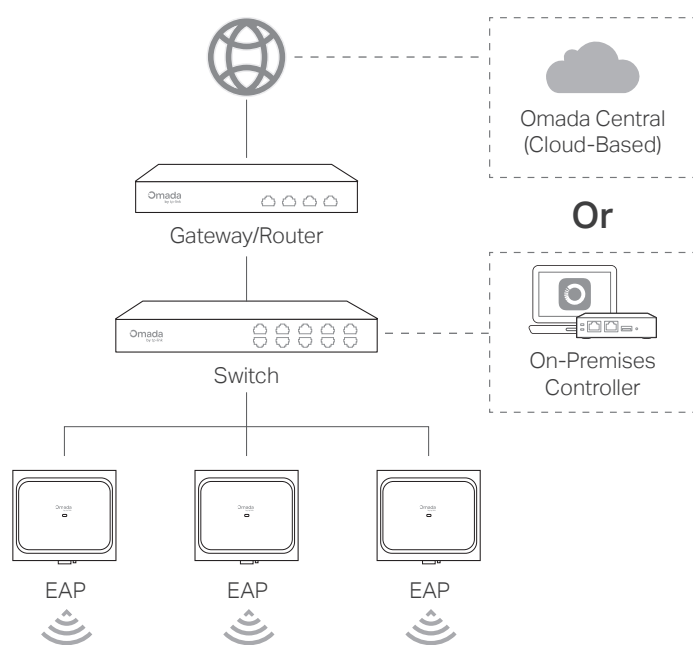
Configure and manage each EAP on its standalone page.



Scan for Standalone Start Guide

## Option 2: Controller Mode

Configure and manage EAPs (and other Omada devices) centrally on an Omada Controller.



Scan for Controller Start Guide

## Omada App

With the TP-Link Omada app, you can access and manage your Omada devices at a local site or remotely with a tap of your phone.



Scan for Omada App

## More Configurations

For more configurations, refer to the User Guides of the Omada Controller and Omada Access Points at: <https://support.omadanetworks.com/document/>



## Safety Information

- Keep the device away from fire or hot environments. DO NOT immerse in water or any other liquid.
- Do not attempt to disassemble, repair, or modify the device. If you need service, please contact us.
- Do not use the device where wireless devices are not allowed.
- This EAP can be powered only by equipment that complies with Power Source Class 2 (PS2) or Limited Power Source (LPS) defined in the standard of IEC 62368-1.
- Use only power supplies listed in the user instructions. Refer to the User Manual on the product support page.

TP-Link hereby declares that the Access Point is in compliance with the essential requirements and other relevant provisions of directives 2014/53/EU, 2011/65/EU, and (EU)2015/863. The original EU Declaration of Conformity may be found at <https://www.tp-link.com/en/support/ce/>.

TP-Link hereby declares that the Access Point is in compliance with the essential requirements and other relevant provisions of the Radio Equipment Regulations 2017. The original UK Declaration of Conformity may be found at <https://www.tp-link.com/support/ukca/>

**Attention:** In EU member states, EFTA countries and Northern Ireland, the operation in the frequency range 5150MHz-5350MHz is only permitted indoors.

**Attention:** In Great Britain, the operation in the frequency range 5150MHz - 5350MHz is only permitted indoors.

For EAP Controller, go to the **Devices** page and select the desired EAP to specify the channel.

For web browser, go to **Wireless > Wireless Settings** to specify the channel.

## More Resources

Main Site	<a href="https://www.omadanetworks.com/">https://www.omadanetworks.com/</a>
Video Center	<a href="https://support.omadanetworks.com/video/">https://support.omadanetworks.com/video/</a>
Documents	<a href="https://support.omadanetworks.com/document/">https://support.omadanetworks.com/document/</a>
Product Support	<a href="https://support.omadanetworks.com/product/">https://support.omadanetworks.com/product/</a>
Technical Support	<a href="https://support.omadanetworks.com/contact-support/">https://support.omadanetworks.com/contact-support/</a>

## Warranty

For details on the warranty period, policy, and procedures, visit <https://support.omadanetworks.com/warranty-services/>.

## Support

For technical support, user guides, and other information, please visit <https://support.omadanetworks.com/>, or simply scan the QR code.



!	AT	BE	BG	CH	CY	CZ	DE	DK	!	UK
	EE	EL	ES	FI	FR	HR	HU	IE		
	IS	IT	LI	LT	LU	LV	MT	NL		
	NO	PL	PT	RO	SE	SI	SK	UK(NI)		